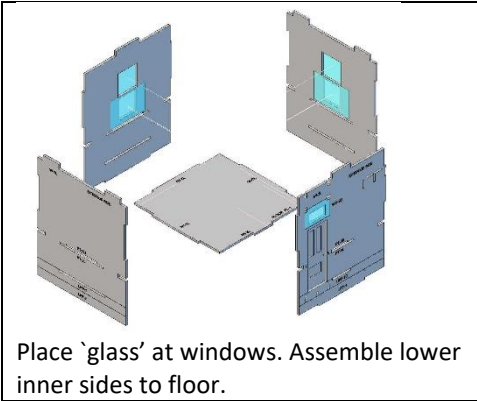




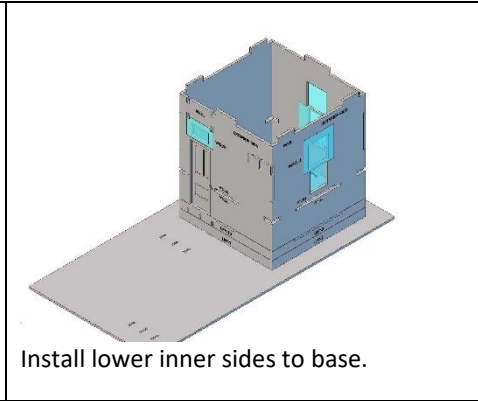
Signal Tower – Assembly instructions

Div. 2 `Keystone', MCR, NMRA

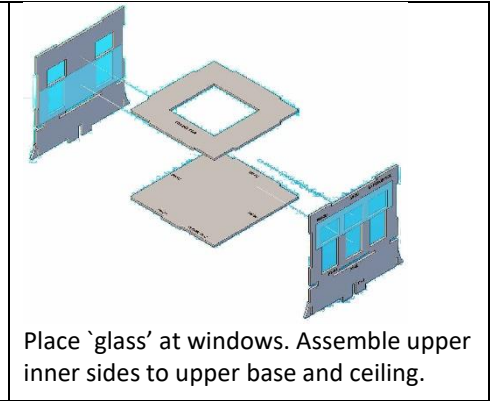
N, HO, S, O Scales



Place `glass' at windows. Assemble lower inner sides to floor.



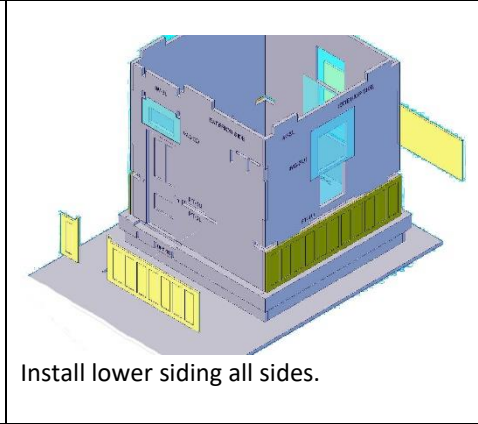
Install lower inner sides to base.



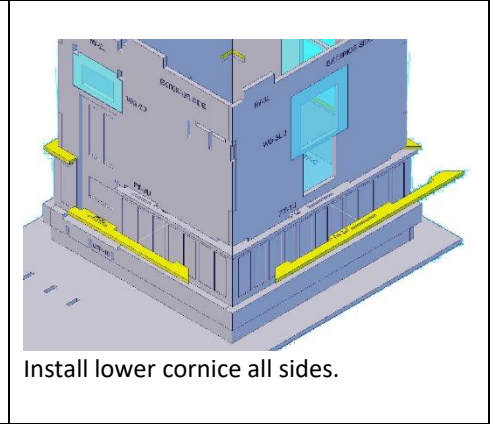
Place `glass' at windows. Assemble upper inner sides to upper base and ceiling.



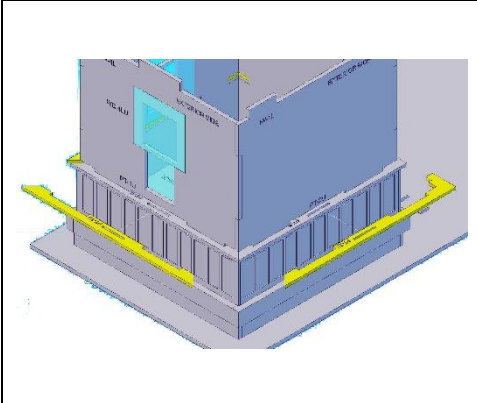
Test fit top floor to bottom floor, then separate.



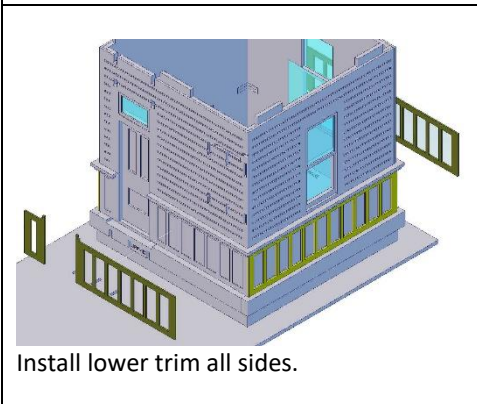
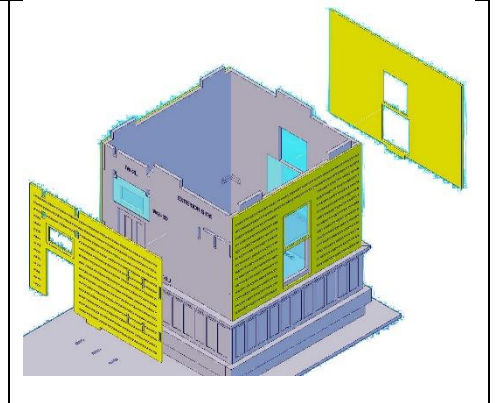
Install lower siding all sides.



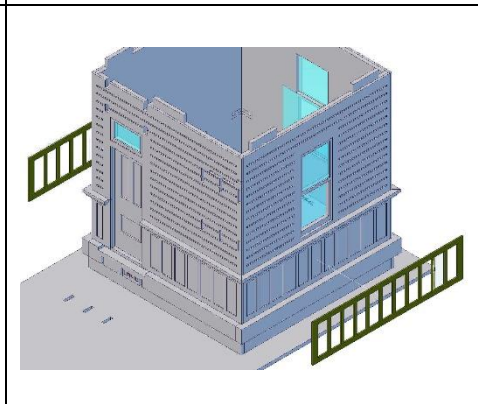
Install lower cornice all sides.



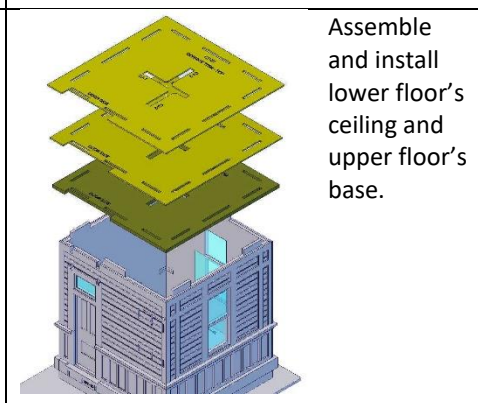
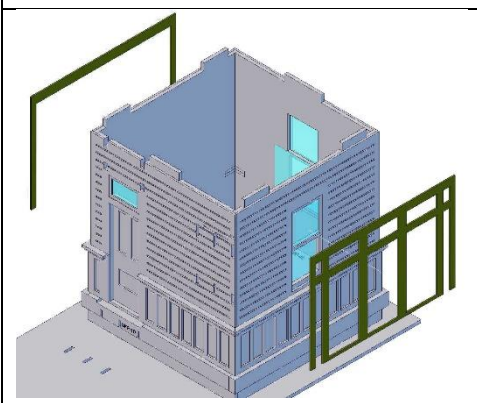
Install upper siding all sides.



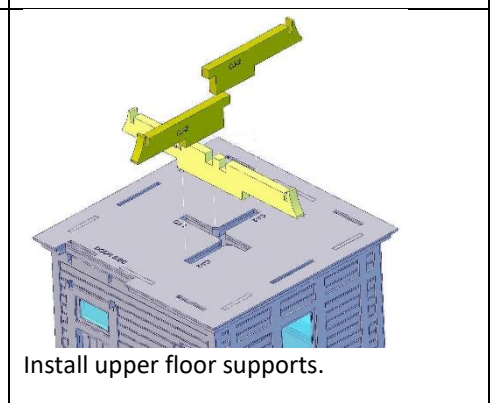
Install lower trim all sides.



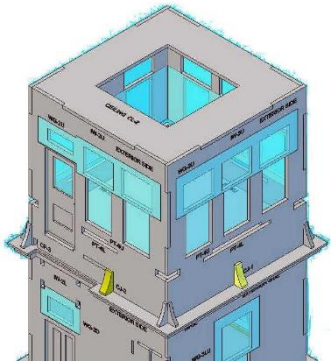
Install upper trim all sides.



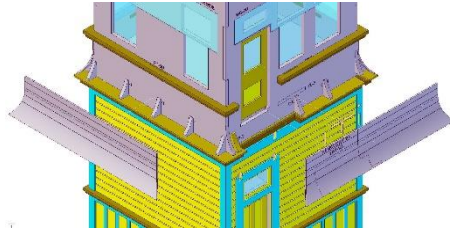
Assemble and install lower floor's ceiling and upper floor's base.



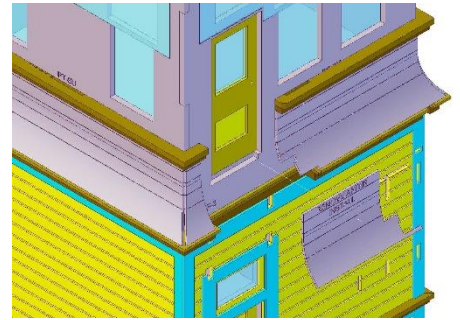
Install upper floor supports.



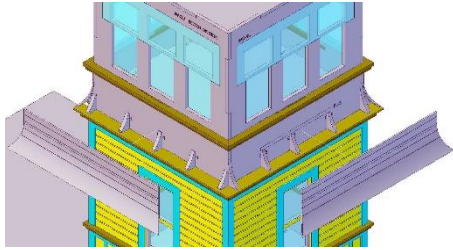
Reinstall upper floor and corner angles.



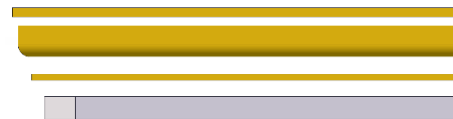
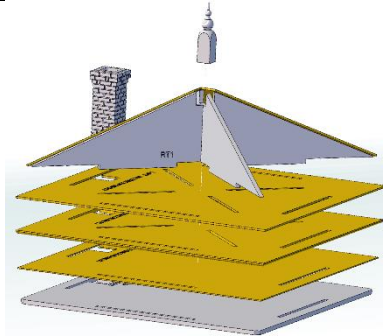
Install remaining angle pieces and curved sheathing.



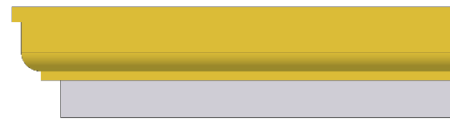
Install shingles, chimney, and finial.



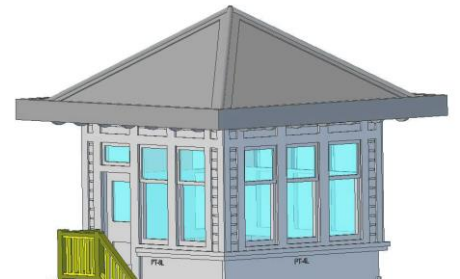
Assemble roof inner structure.



Assemble roof edge for all sides.

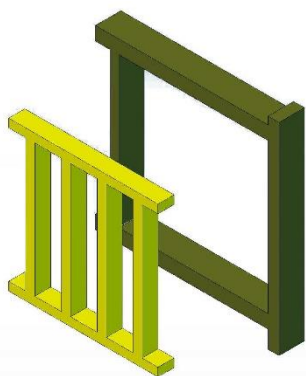
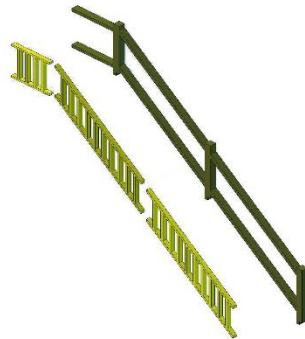
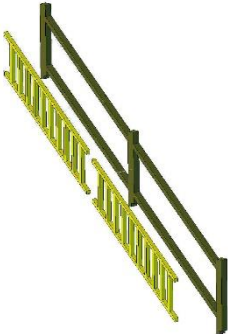


Install roof edge all sides.



Fit roof to upper floor.

Install balusters in all upper and lower railings.



Install stair supports and stairs.



Prototype photo (Gary Kohler)